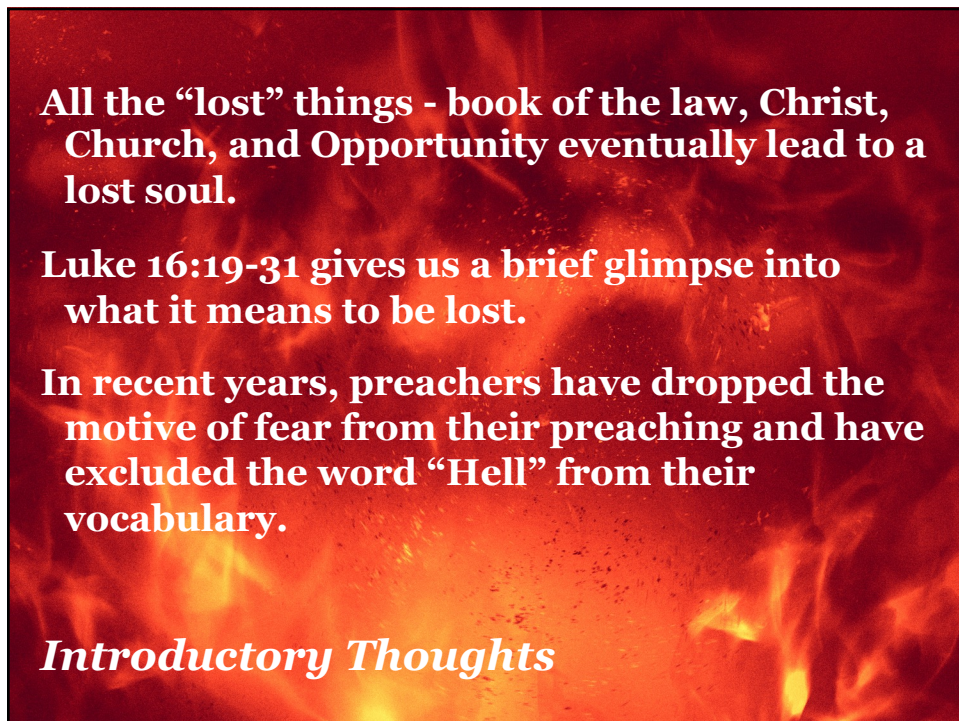




1



2

Some recent church ads.

From the above ads, we see that the philosophy of many people concerning preaching is to be clever, informal, positive, brief, and never, never use the H-word.

Friends, I don't buy into such a philosophy, nor did Jesus and his apostles.

Let's focus our attention on "what does it mean if I lose my soul?"

Introductory Thoughts

3

Every argument that can be used against Hell, can also logically be used against Heaven.

When God made you a living spirit, you became immortal. No living being will ever cease to exist.

Mark 9:44.

Hell Is Eternal - Matthew 25:46

4

Note the progression...not just darkness, but the blackness of darkness...not just the blackness of darkness, but outer darkness

Hell is the place farthest removed from light – God is light, therefore, God will not be in Hell with the lost.

There will be no one who will listen to your prayers, or to hear you as you scream for mercy.

Darkness is terrifying – we all seek the security of light.

***Hell Is a Place of Darkness - 2 Peter 2:4
- Jude 13 - Matthew 25:30***

5

Matthew 13:42.

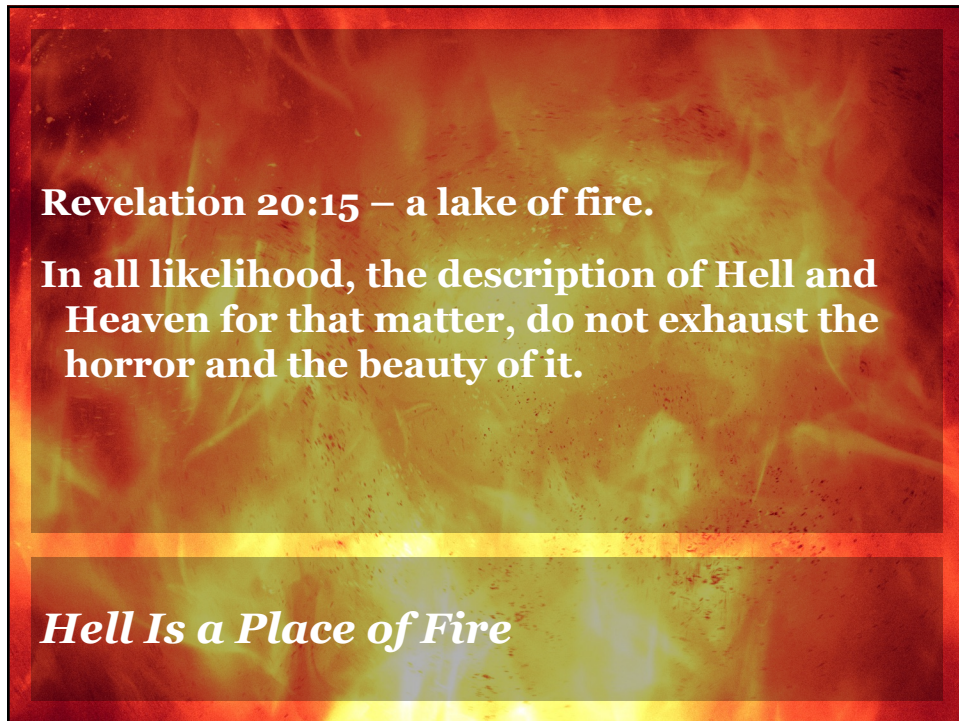
Matthew 25:41.

Mark 9:44-45.

Revelation 20:10.

Hell Is a Place of Fire

6

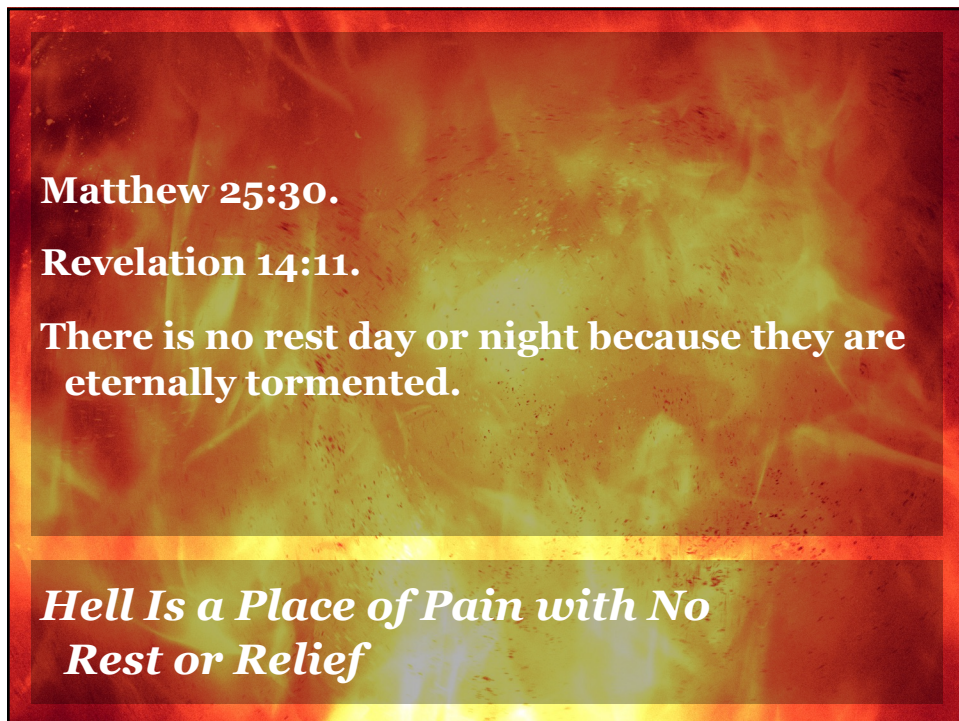


Revelation 20:15 – a lake of fire.

In all likelihood, the description of Hell and Heaven for that matter, do not exhaust the horror and the beauty of it.

Hell Is a Place of Fire

7



Matthew 25:30.

Revelation 14:11.

There is no rest day or night because they are eternally tormented.

Hell Is a Place of Pain with No Rest or Relief

8

Dante's Inferno divided Hell into ten parts. I don't know how he came up with the number ten, but I do know where he got the principle for degrees of punishment.

Matthew 11:21-24.

Luke 12:47-48.

Hell Is a Place That Is Worse for Some Than Others

9

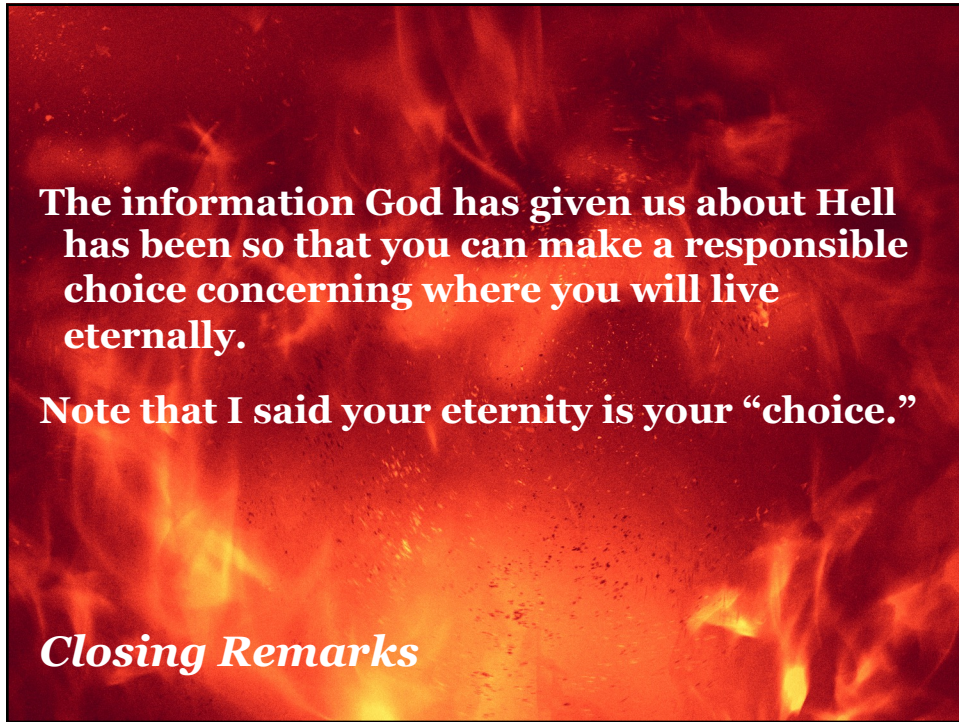
**It's punishment is everlasting –
Matthew 25:46.**

How long is eternity?

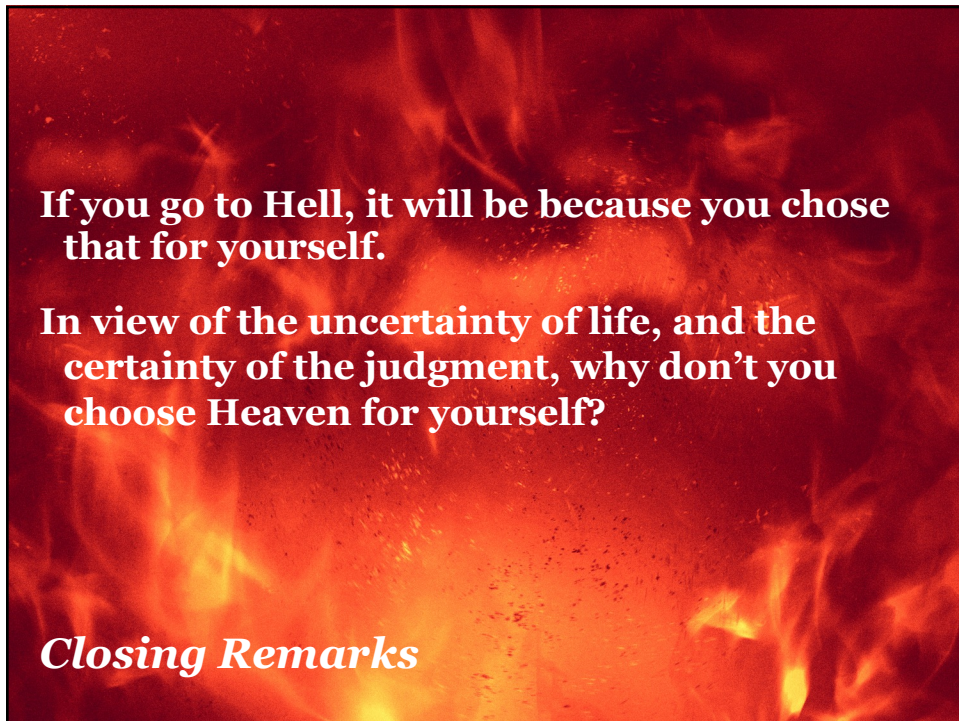
Hell simply has no end, God is not present to hear your cries.

Hell Is a Place of No Hope

10



11



12